

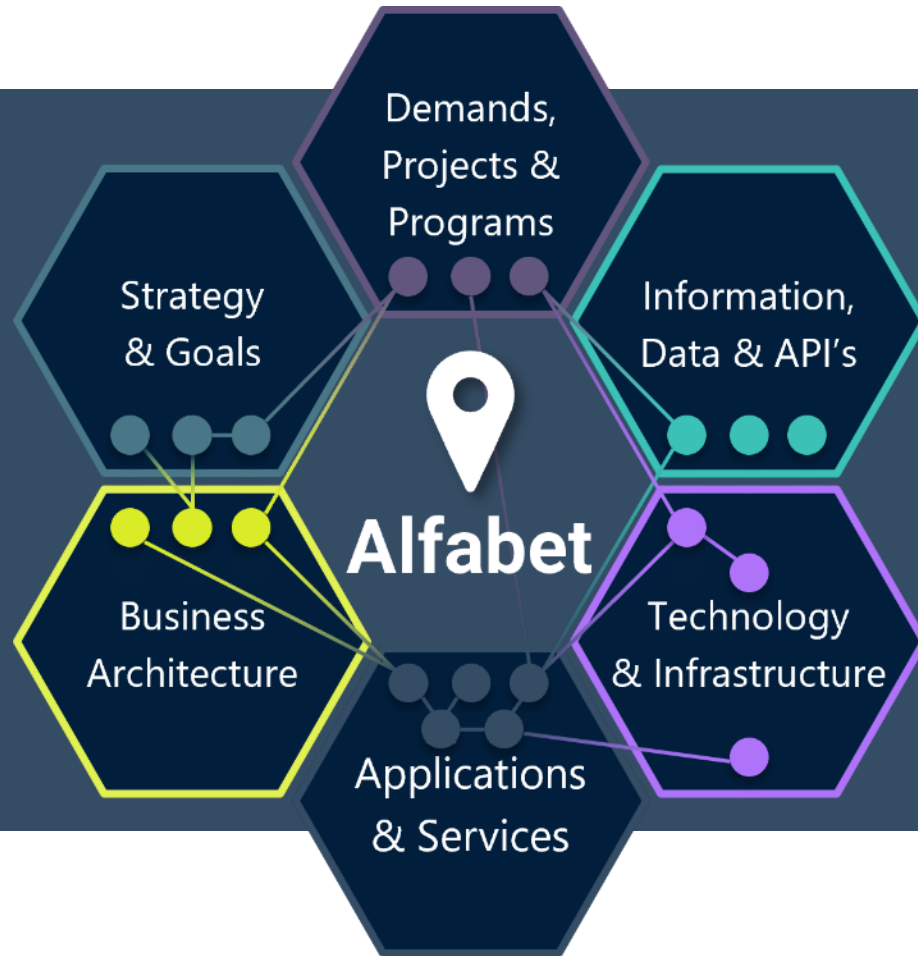
Alfabet 11

Simply Strategic Enterprise Transformation

Invest wisely, plan brilliantly and execute flawlessly on IT-driven digital business initiatives

Alfabet for EA and Strategic Portfolio Management

A GPS for your digital transformation journey



Like a GPS, Alfabet guides you in realizing strategic change by connecting and synchronizing dynamic portfolios for better informed, well-founded and faster decisions.

The drivers of EA and Strategic Portfolio Management

Who's asking the questions?

Business Owner

- Is my strategy being realized?
- How quickly can we change it?
- Are we seeing any benefits?

Strategy Realization Office

- Does business know what it wants?
- How aligned is the EPMO?
- What measures of success to use?

Product Owners

- Do epics relate to strategy?
- What's the status of feature realization?
- How is satisfaction with the last release?



EPMO

- What's the status of capability delivery?
- Are resources/budget impacting delivery?
- How quickly can I replan?

Enterprise Architecture

- Is the operating model aligned to strategy?
- Is the operating model agile?
- What are the impacts of change?

Delivery Teams

- Which features are to be prioritized?
- What architecture to use?
- Which principles apply?

Alfabet 11 addresses the needs of a new, expanded group of stakeholders

Alfabet 11 - Re-vamped, revitalized and ready to run!

Same inner conviction:

- Meaningful insights come from a rich repository of information **supplied by** a large and diverse pool of stakeholders.
- The value of Alfabet increases with the number of stakeholders **employing** quality insights for their daily decision-making

Rejuvenated for a new IT paradigm:

- Make it easy for ALL stakeholders to **contribute** information
- Make it easy for ANY stakeholder to **derive** meaningful insights



Focal points for Alfabet 11

Our maxim: Keep IT simple!

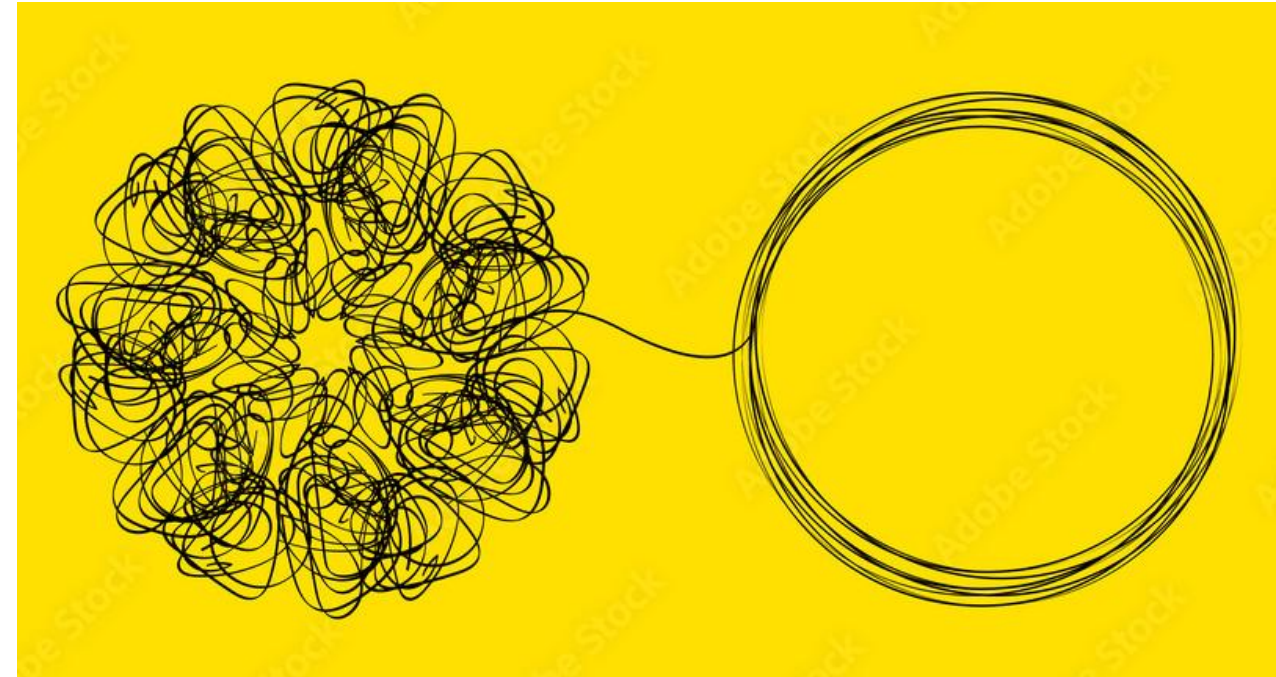
Easy-on-the-eyes **design** for new business users

Easy **navigation** for quick answers to questions

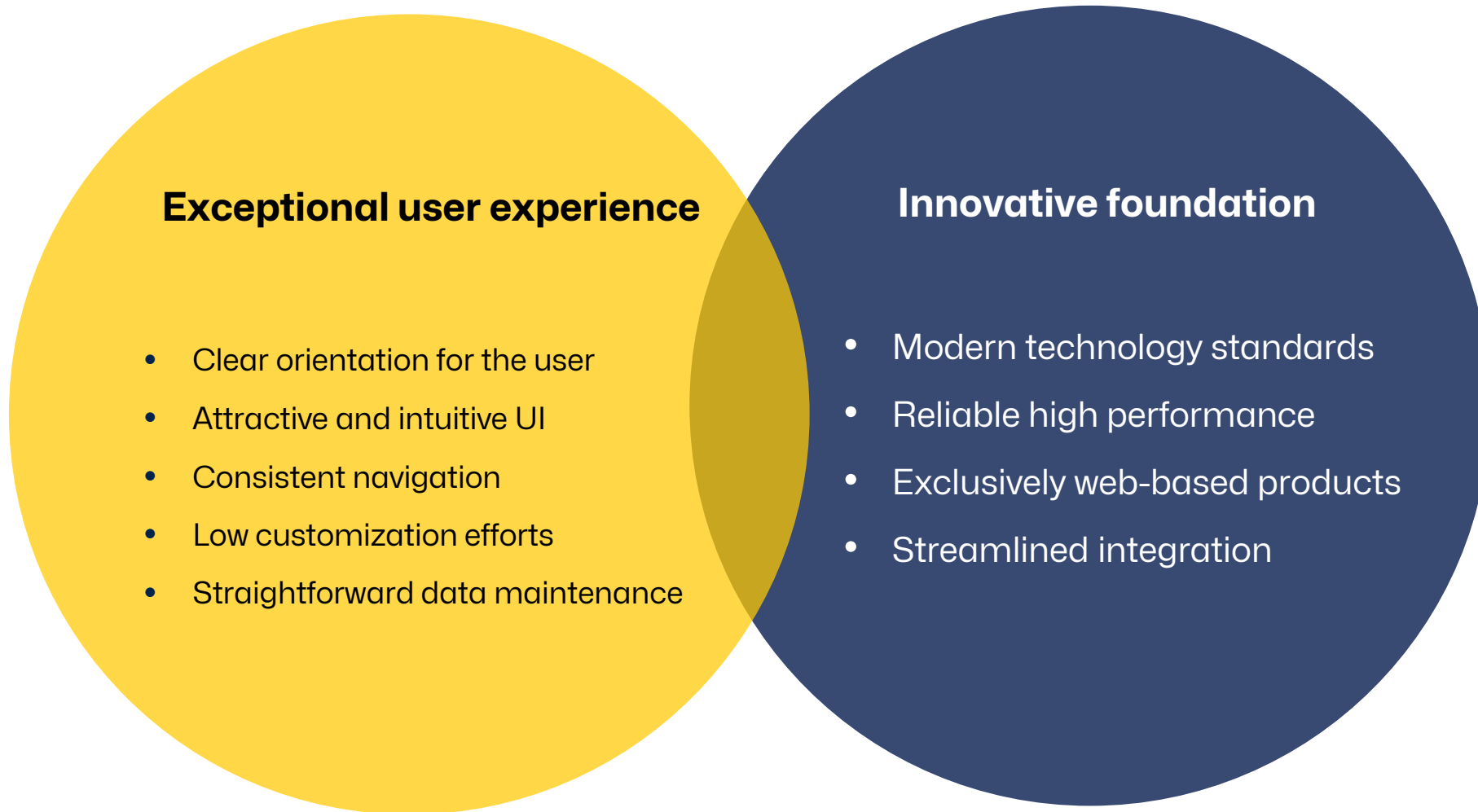
Easy **on-boarding** for fast time to value

Easy **integration** portal for ecosystem leverage

Easy **configuration** for support of any use case



Design and development doctrine for Alfabet 11



Alfabet 11 – Strategic Initiatives

A framework to manage investments in our roadmap based on market trends and business need.

Flexible and
consistent
**dashboarding/
reporting**

Data filtering
and **scope
sharing**

Easy and
guided **data
entry**

State of the art
**modelling
capabilities**

**Functional
richness** of
Alfabet 10 and
beyond

Migration of
existing
customers

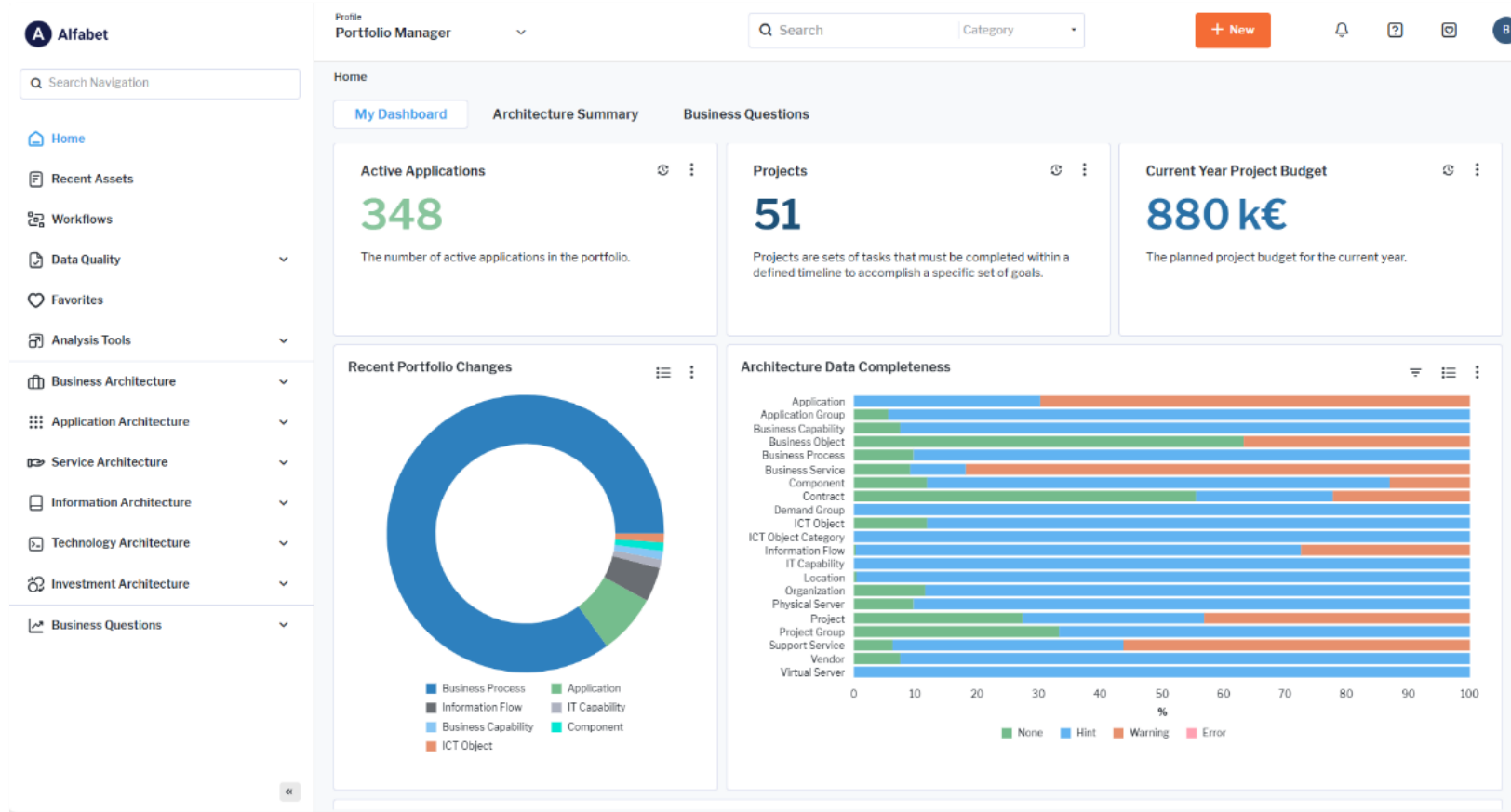
Intelligent &
contextualized
Help

Intuitive and
web-based
**solution
configuration**

Plug and play
integrations

Performant and
modern system

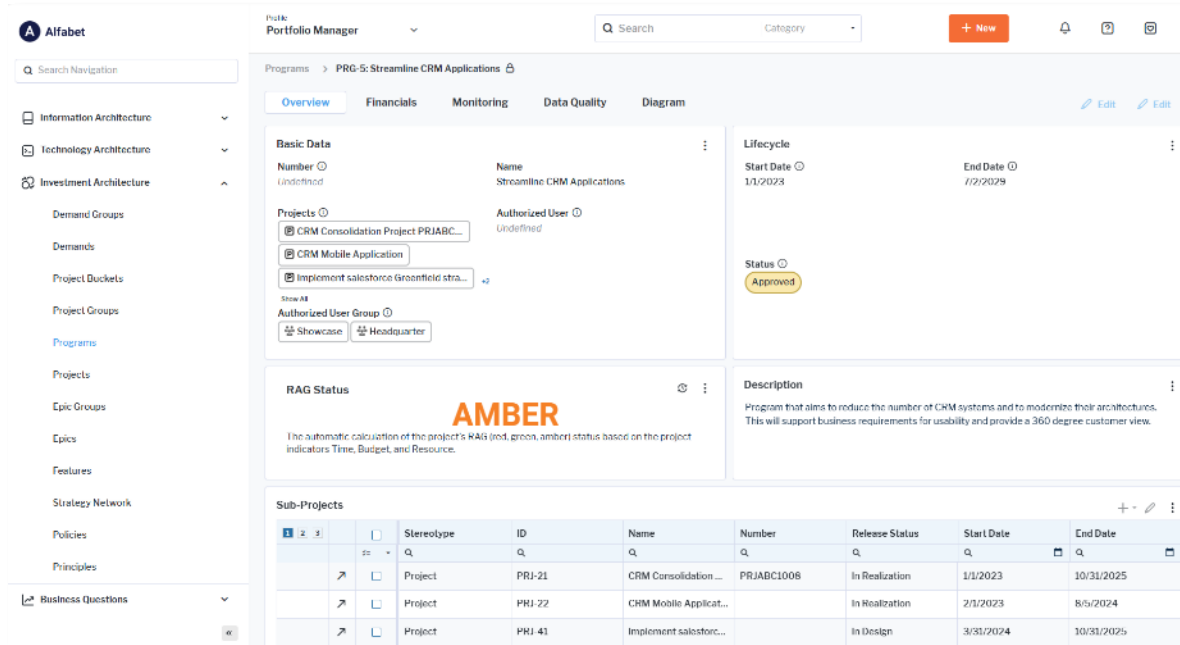
New UI/UX for easier access to portfolio insights



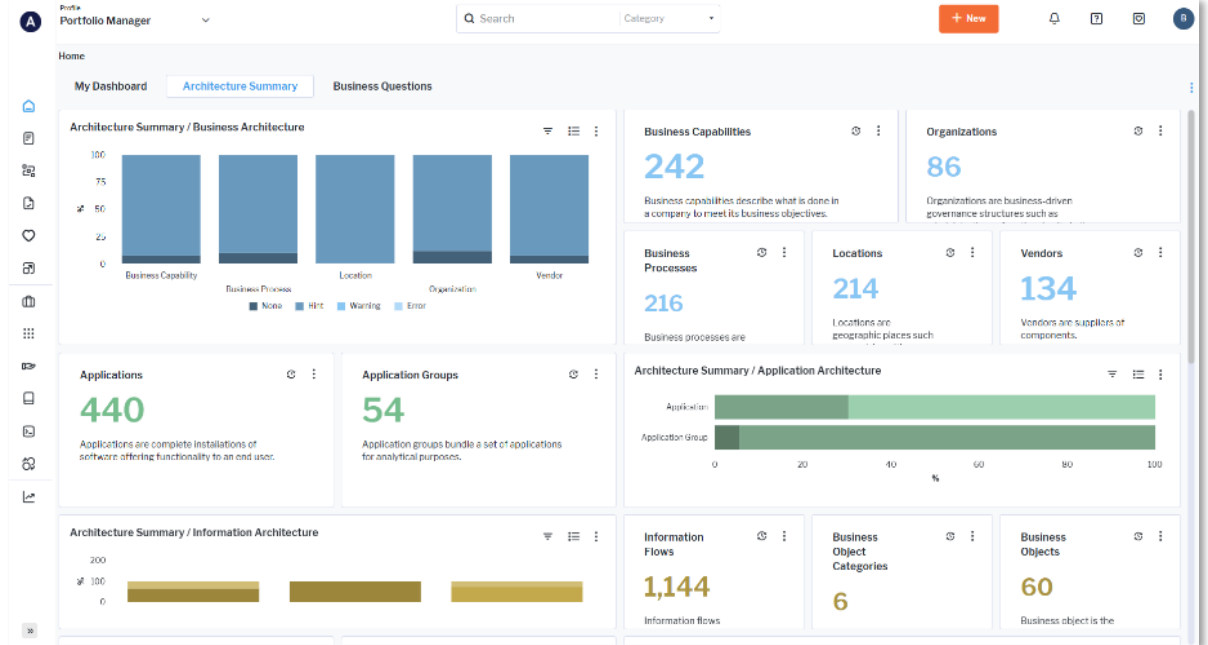
Clean, simple and flexible user interface for increased productivity

- Newly designed, intuitive, easy navigation between Alfabet views
- Optimized, contextualized object-based search on selected categories. Enhances in-product navigation capabilities
- Powerful filtering options supporting work routines
- In-product guidance for easier, faster onboarding with less training effort
- In-product modification of visual themes (colors and fonts)

Newly designed, customizable content area visualization

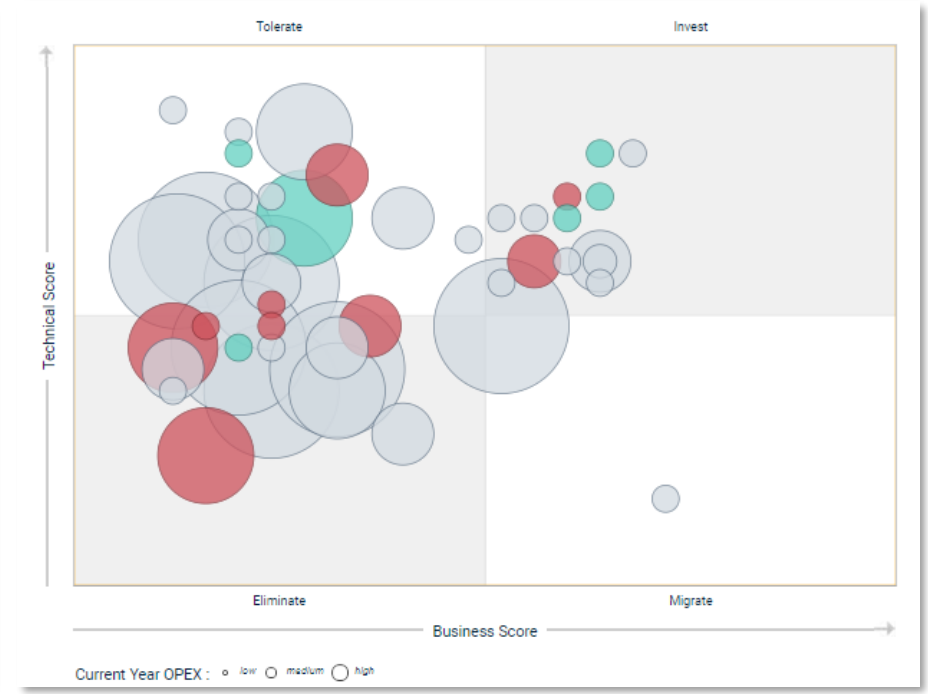
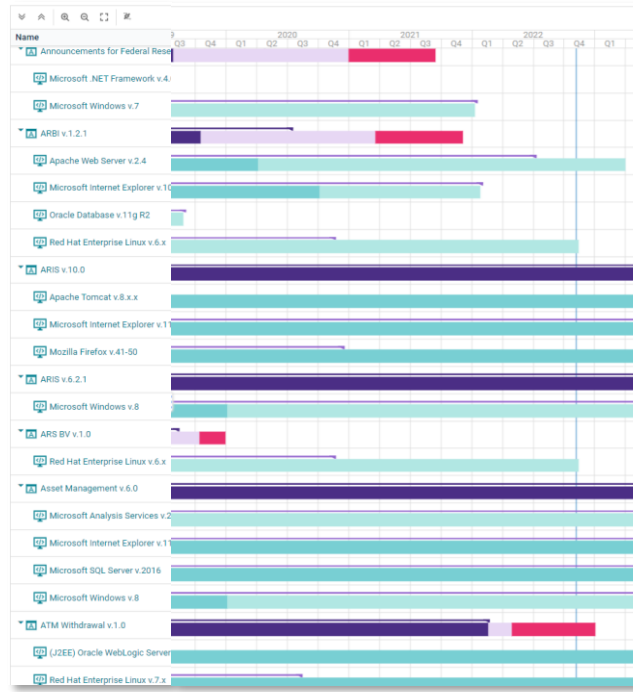
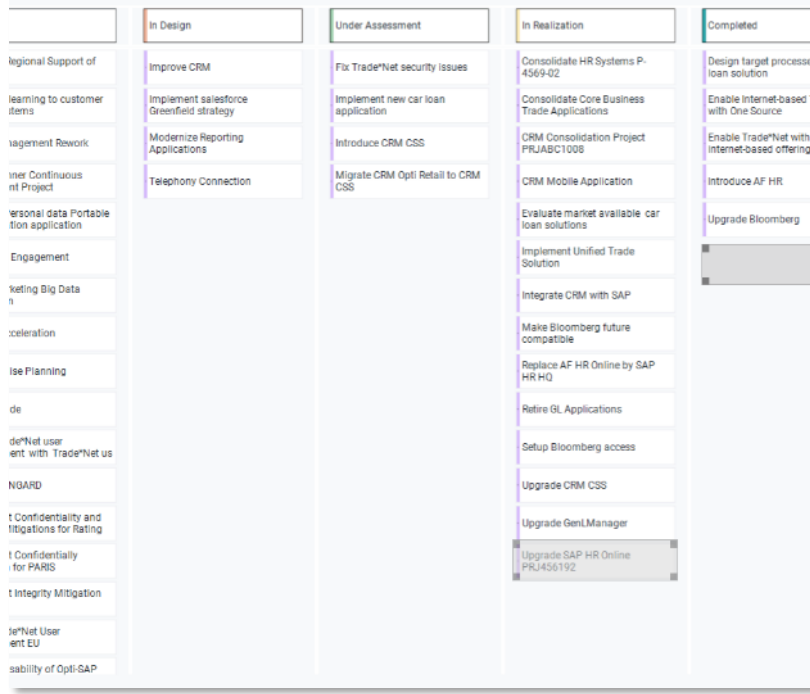


- Class views
- New easy inline editing of all object property values
- At-a-glance object information for object analysis from various architectural perspectives



- Dashboards
- Visualization of multiple reports and analytics views in one dashboard to gain a quick overview of the IT portfolio
- User modification for personalized analysis views

Effective communication of data with enhanced visualization



The new UX/UI comes with a library of pre-defined charts and reports for optimized, smart and ad-hoc visualization of data

- Use predefined smart data visualizations for easy, clear and compelling presentation and reporting
- Have actionable insights with interactive graphs, charts and maps

- Direct in-report interactions for editing, updating and managing data on the fly
- Easy data interactions with drag and drop filtering options and direct navigation to an object

Smart Data Management



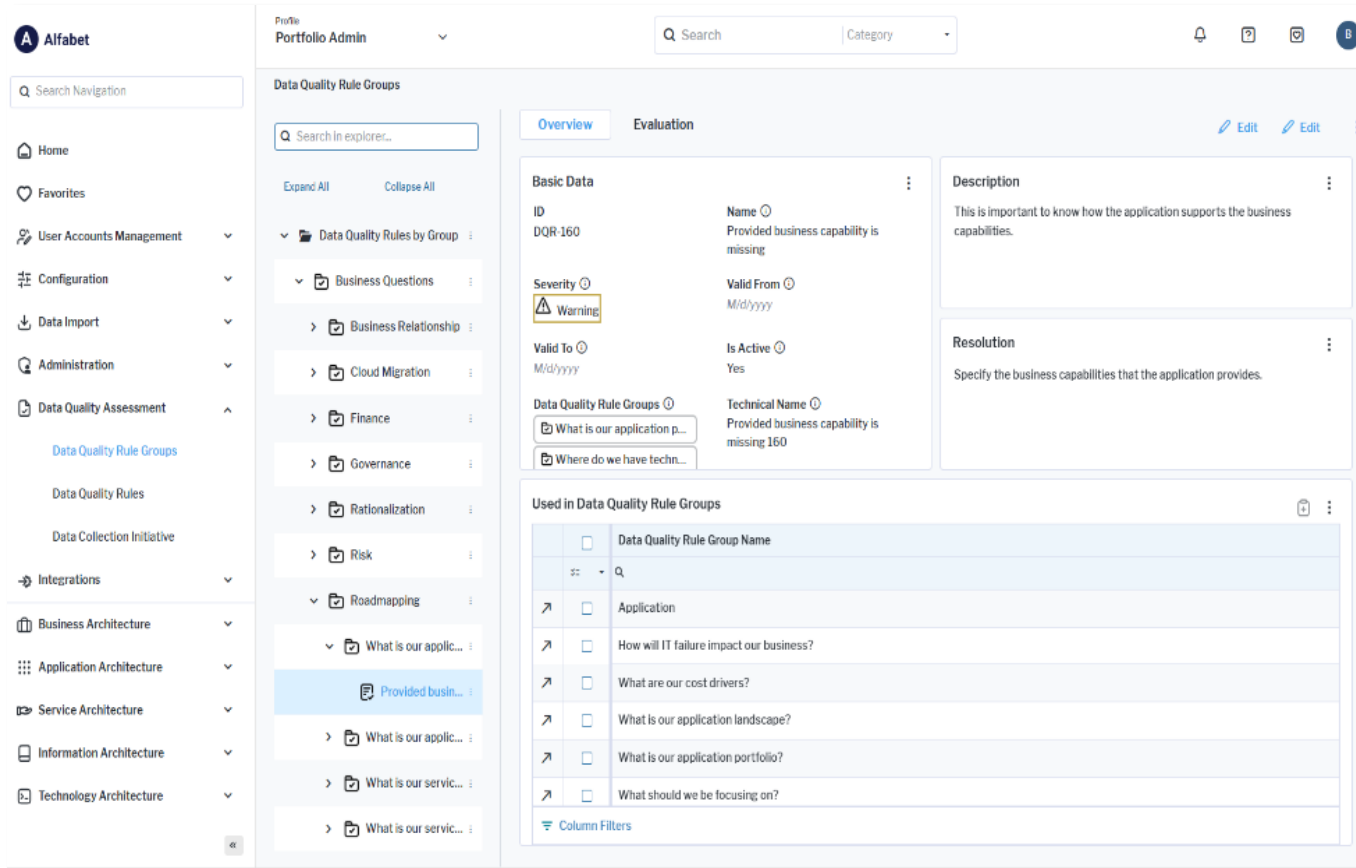
Complete, consistent and up-to-date data is key to making the right decisions

**Ensure data
quality**

**Simplify data
management**

**Establish a
sustainable data
flow**

Achieve optimal data quality with data quality rules



Enhance decision-making based on reliable and precise information

- Pre-defined & customizable data quality rules per object class facilitate optimal data quality and consistency
- Identify bad data before it enters the system with alerts on data misalignment. Provide guidance on how to resolve the issue
- Ongoing capture of data quality issues with ADIF jobs
- Easily create data quality reports for improved data integrity and governance

Easy data management with the Smart Data Workbench

Found: 440 Selected: 15

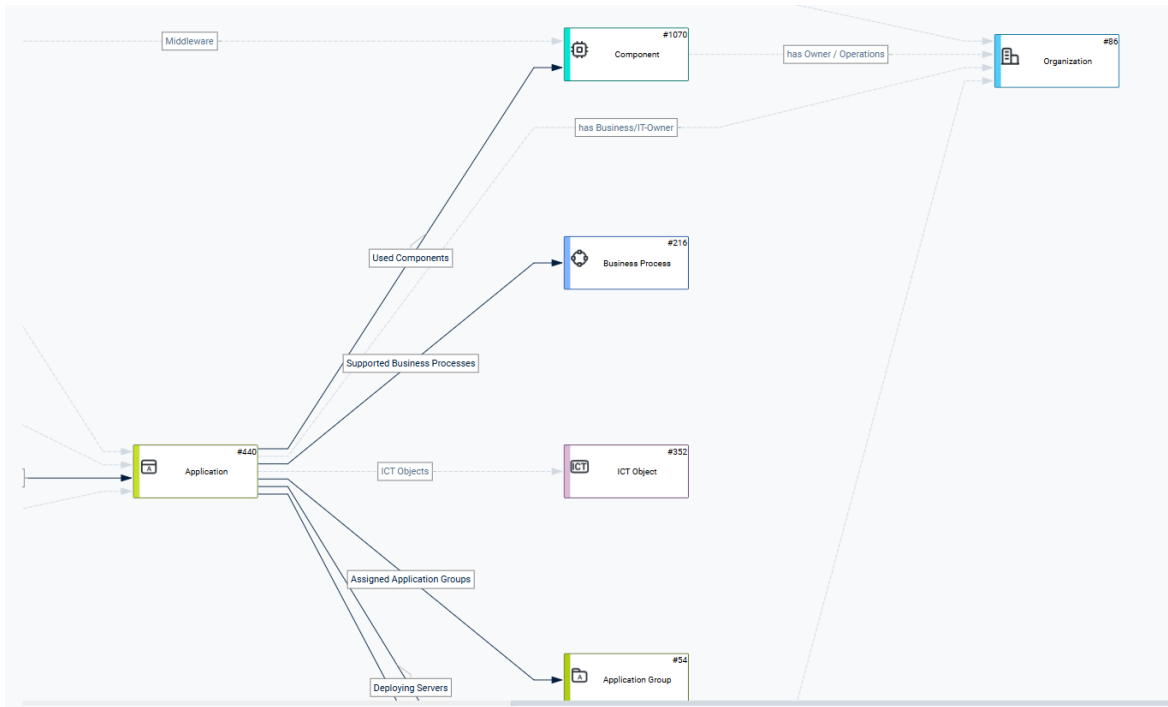
+ New Edit Filter Structure Visualize

	#	Application	Short Name	Object State	Start Date	End Date	Status	Recommendation	Architecture Type
				All			All	All	All
↗	1	1C Payroll RU 3.2		Active	1/15/2019	1/15/2026	Approved	Eliminate	
↗	2	ACCOUNT 1		Active	6/16/2015	1/9/2024	Approved	Unknown	External Webpage
↗	3	ACCOUNT 1.2		Active	1/10/2024	8/4/2032	Approved	Invest	Cloud-Based
↗	4	ACCOUNT 1.2.1		Plan	8/6/2032	2/28/2041	Approved	Invest	Cloud-Based
↗	5	Administrative ...	AGL	Active	11/15/2020	6/9/2029	Approved	Tolerate	Distributed
↗	6	ADP Payroll US...		Plan	12/14/2015	12/14/2026	Approved	Invest	
↗	7	AF Enterprise C...	AFECT	Retired	3/30/2018	9/25/2021	Draft	Migrate	Mainframe
↗	8	AF Enterprise C...		Active	12/14/2017	7/8/2026	Draft	Tolerate	Distributed
↗	9	AF Good Buy 2.0		Retired	9/11/2018	11/16/2021	Draft	Invest	Cloud-Based
↗	10	AF Good Buy 3.0		Plan	7/12/2025	12/13/2028	Draft	Tolerate	Distributed
↗	11	AF HR Online E...	SAP HR HQ EU	Active	3/30/2018	9/24/2022	Approved		Distributed
↗	12	AF HR Online U...	SAP HR HQ US	Active	3/30/2018	9/24/2026	Approved	Tolerate	Distributed
↗	13	AF WorkPortal ...	WorkPortal	Active	8/9/2023	2/21/2026	Draft	Invest	Distributed
↗	14	Agile Access 1		Active	11/9/2021	8/8/2023	Draft		Cloud-Based
↗	15	Agile Access 2		Active	7/9/2022	3/23/2024	Draft		Distributed

The Smart Data Workbench facilitates data integration to eliminate data silos. It fosters collaboration in the data

- Easy Excel-like inline editing of data for fast and simple data updates to improve data quality
- Leverage semantic and meta model information for significantly less configuration
- Create data filters on the fly using in-product functionality instead of report configuration
- Ad-hoc visualization and direct updating of data

Optimized and simplified data capture templates



AutoSave Off APPLICATION_2B05D58E01234304B4D454... Rizvi, Ali RA

File empower Home Insert Draw Page Layout Formulas Data Review View Help Team

J2 : X ✓ f_x Trash

	A	C	D	E	F	G	H	I	J	K	L	M	N
	Operations	Name	Version	Short Name	Description	Start Date	End Date	Object State	Status	Alias	Architecture Type	Development Type	Authentication
1		SAP@ 4.0		SAPAI		12/30/2014	4/18/2023	Retired	Trash		Client-Server	COTS – Configured	Single Sign-C
2		GEVA 1				6/15/2012	1/8/2021	Active	Approved		Mainframe	Bespoke	Single Sign-C
3		(J2EE) 1				7/17/2019	7/16/2024	Active	Data imported				
4		Profit ε 1.0				11/13/2013	6/7/2022	Active	Draft		Distributed	COTS – Configured	Single Sign-C
5		Karl M 1				11/1/2022	#####	Active	Under Review				
6		New A 1				5/10/2014	9/26/2023	Plan	Draft		Cloud-Based	COTS – Configured	Multi-Factor &
7		Clover 1				11/16/2022	#####	Retired	Trash				
8		Heli ap 1		HA		11/26/2022	#####	Active	Draft		Cloud-Based	COTS – Configured	Single Sign-C
9		First H 1.0				11/26/2022	#####	Active	Approved		Cloud-Based	COTS – Customized	
10		GFM ε 5.1.1				5/20/2014	6/1/2022	Active	Approved		Distributed	COTS – Configured	Single Sign-C
11		Neven: 1.0				12/4/2019	#####	Active	Approved				
12		New A .				2/14/2022	9/10/2025	Plan	Data importe		Client-Server	Bespoke	Multi-Factor
13		OpenA 1		OA		1/11/2022	1/13/2025	Active	Draft				
14		Google 5.0				1/12/2022	1/26/2022	Active	Draft				
15		GGM 1.0				6/17/2013	5/10/2022	Active	Approved		Distributed	COTS – Configured	Single Sign-C
16		Micros 1.0				12/12/2022	1/8/2025	Active	Draft				
17		Zoom 1.0				1/13/2022	1/27/2022	Active	Draft				
18		GL Tra 2.3				2/23/2016	6/27/2022	Retired	Approved		Distributed	COTS – Configured	Single Sign-C
19		Global 1.10.3		WGW		7/17/2015	2/9/2024	Active	Approved		Cloud-Based	COTS – Configured	Single Sign-C
20													

Export Help

Ready Display Settings 100%

Ensure a sustainable flow of data with optimized data import & export

- Easy import and export of data via Excel templates

- Global and localized generation of data files based on classes and business question reports

- Easy configuration and in-product support to create out-of-the-box and ad-hoc data capture templates



Want to know more?

<https://www.alfabet.com/contact>